

Moving to Active Directory

John P. Healy

University of Phoenix

POS 427 – Windows Networking

January 26, 2005

Introduction

With the implementation of Active Director to our network, it will be essential to have an implementation plan. According to Microsoft, the most important aspect of migrating to Active Directory is appropriate planning. Migrating to Active Directory is accomplished by looking at the business plan and business rules our company follows.

Discussion

In order to accomplish this task we must first look at the organizational outline of the organization see figure 1. According to Microsoft's website, "Active Directory sites are used by Active Directory to reflect the physical topology of your network. Where users and applications go for directory information is based on the site they are in. Active Directory also uses Active Directory sites to build a directory replication topology so that Active Directory can replicate efficiently"(Microsoft). Viewing the organizational chart one can see a simple way to implement the Active Director by using the natural layout of our organization. If you look at figure 2 you will see the over all layout of the Active Directory. With the current layout of the Active Directory, it will be a simple mater to implement rules according to where the users fall into on the Active Director layout. One rule will be users will only be able to see and access any objects in there own branch and any leaves below there branch. Users will be prevented from traversing up the tree and over to a different branch. This is accomplished by the implication if rules in the Active Directory structure and the natural benefits of using a tree topology for Active Directory

The next step in implementing Active Directory is planning the Domain Controller. According to Microsoft,

planning domain controller capacity protects you from underestimating hardware requirements. Underestimating your hardware requirements can cause poor performance and application response time, and can prevent users from quickly logging on to the network to access resources. Effectively planning domain controller capacity also helps to protect against overloading domain controllers (Microsoft, P1, 2004).

Doing this step will protect the organization from unneeded down time do to insufficient preparation of the hardware required for moving to Active Directory. According to Microsoft “migrating user accounts, resources, and groups requires special consideration when you restructure Active Directory domains within a forest because of the containment rules that apply to Active Directory groups” (Microsoft, 2004). What this boils down to is good planning. As long as we have good planning and preparation, we can mediate any problems from restructuring Active Directory Domains within a forest. This will give the Network Administrator the ability to restrict the resources on the network for the users and the ability for the Network Administrator to create rule to prevent user from getting to directories and servers the user is not authorized to access. The only problem with doing this type of control is the inheritance of control roles from the branch to the leaves in our Active Directory tree structure.

From all of the Microsoft resources for moving to Active Directory there is one idea more prevalent for moving to Active Directory then any other, good and proper planning is the most important aspect of moving to Active Directory. With good planning, we can lesson the amount of problem accord in migrating to Active Directory.

Figure 1

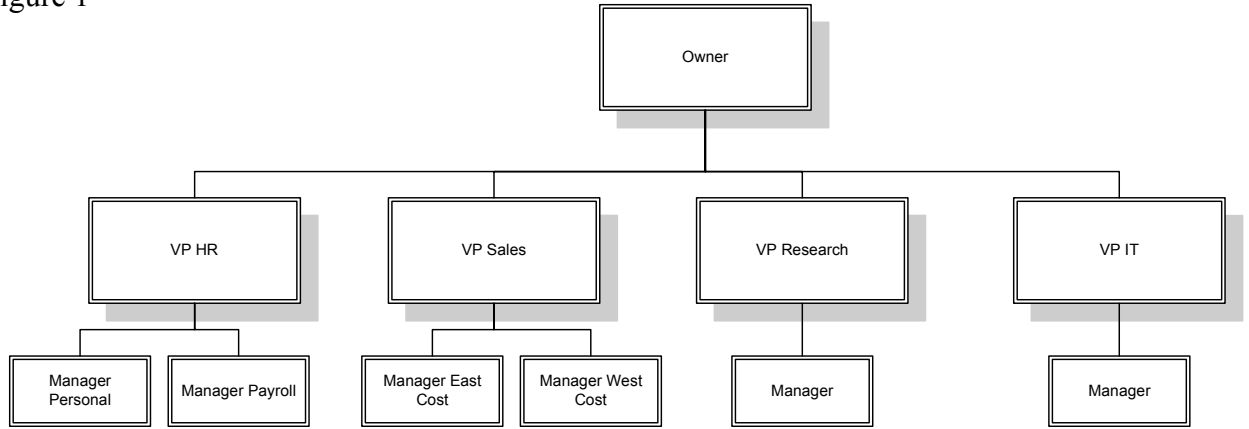
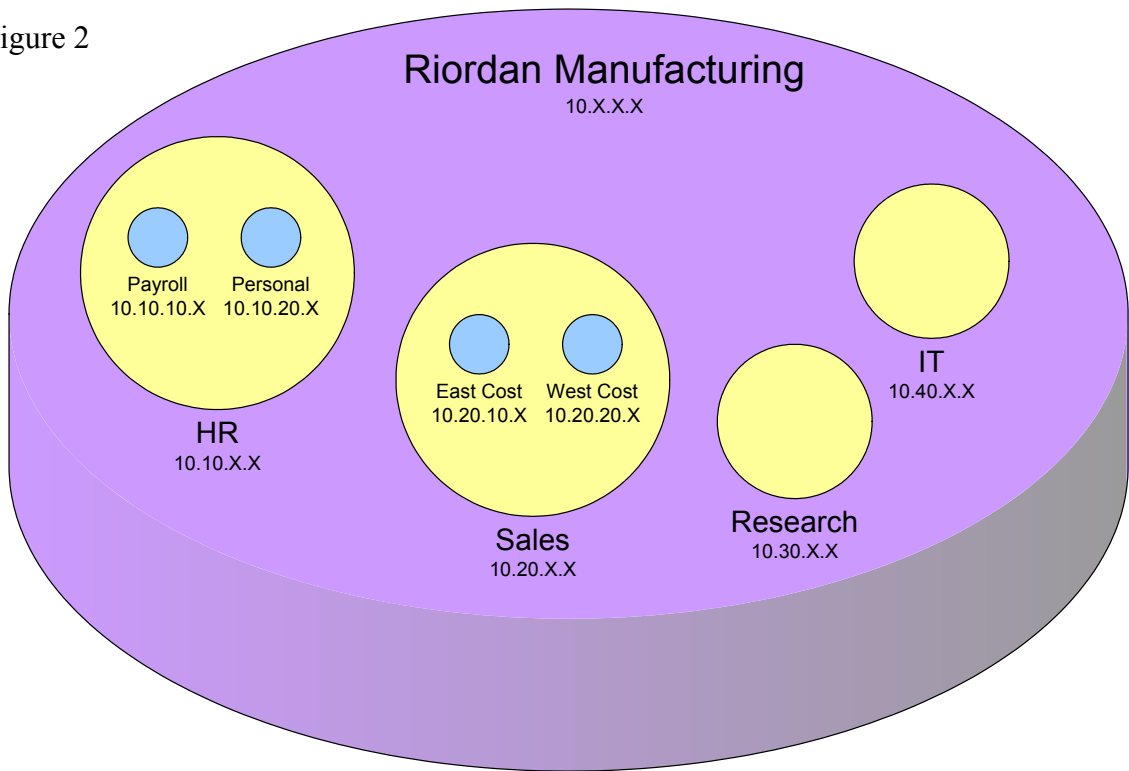


Figure 2



Reference

Microsoft. *Microsoft CRM Implementation Guide - Planning CRM and Active Director*.

Retrieved January 26, 2005,

www.microsoft.com/technet/prodtechnol/mscrm/mscrm1/plan/07_plnad.msp

Microsoft (July 2004). *Windows Server 2003*. Retrieved January 26, 2005,

download.microsoft.com/download/5/2/f/52f23d76-7d56-44d6-ad25-

[a95bf0be5516/07_CHAPTER_4_Planning_Domain_Controller_Capacity_version_2.doc](http://download.microsoft.com/download/5/2/f/52f23d76-7d56-44d6-ad25-a95bf0be5516/07_CHAPTER_4_Planning_Domain_Controller_Capacity_version_2.doc)

Microsoft (July 2004). *Windows Server 2003*. Retrieved January 26, 2005,

download.microsoft.com/download/5/2/f/52f23d76-7d56-44d6-ad25-

[a95bf0be5516/15_CHAPTER_12_Restructuring_Active_Directory_Domains_Within_a_Forest.doc](http://download.microsoft.com/download/5/2/f/52f23d76-7d56-44d6-ad25-a95bf0be5516/15_CHAPTER_12_Restructuring_Active_Directory_Domains_Within_a_Forest.doc)